

# MONTANA SHARES 2023/2024 PLEDGE FORM

Print Name: \_\_\_\_\_

Employer: \_\_\_\_\_

Home Address: \_\_\_\_\_

City/Zip: \_\_\_\_\_

E-mail: \_\_\_\_\_

Signature: \_\_\_\_\_

## GIVE BY PAYROLL CONTRIBUTION

### Payroll Contribution

I authorize my employer to deduct the following amount from each paycheck:

☐ \$100   ☐ \$50   ☐ \$25   ☐ \$10   ☐ \$5  
☐ Other \$ \_\_\_\_\_

\_\_\_\_\_ x \_\_\_\_\_ = \_\_\_\_\_

# of pay periods   Amount of deduction   Total pledge

We honor your choice. You may designate all or part of your gift to go to one or more of our member groups listed to the right; otherwise, your tax deductible gift will be shared among members.

## GIVE BY CHECK OR CASH

### One Time Gift

I am enclosing a check in the amount of \$ \_\_\_\_\_ to Montana Shares.

## GIVE BY CREDIT CARD

### To give by credit card,

Please use our secure online giving tools at [www.montanashares.org](http://www.montanashares.org)

**Montana Shares**  
**PO Box 883**  
**Helena, MT 59624**

## MEMBER ORGANIZATIONS

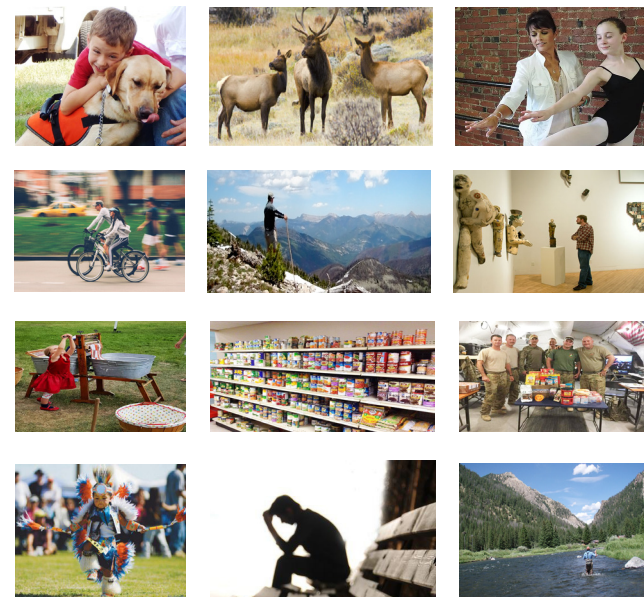
- \_\_\_\_\_ Montana Shares (for work with its members)
- \_\_\_\_\_ Alternative Energy Resources Organization (AERO)
- \_\_\_\_\_ Big Brothers Big Sisters of Montana
- \_\_\_\_\_ Bike Walk Montana
- \_\_\_\_\_ Bridgercare
- \_\_\_\_\_ Butte Spirit Center
- \_\_\_\_\_ Camp Mak-A-Dream
- \_\_\_\_\_ Cancer Support Community Montana
- \_\_\_\_\_ Disability Rights Montana
- \_\_\_\_\_ Friends of the Historical Museum at Fort Missoula
- \_\_\_\_\_ Friends of the Missouri Breaks Monument
- \_\_\_\_\_ Great Falls Community Food Bank
- \_\_\_\_\_ Heart of the Valley Animal Shelter
- \_\_\_\_\_ Holter Museum of Art
- \_\_\_\_\_ Jeannette Rankin Peace Center
- \_\_\_\_\_ K9 Care Montana
- \_\_\_\_\_ Last Chance Community Pow Wow
- \_\_\_\_\_ Lewis & Clark Humane Society
- \_\_\_\_\_ Montana Association for the Blind
- \_\_\_\_\_ Montana Audubon
- \_\_\_\_\_ Montana CASA/GAL Association
- \_\_\_\_\_ Montana College Attainment Network
- \_\_\_\_\_ Montana Discovery Foundation
- \_\_\_\_\_ Montana Food Bank Network
- \_\_\_\_\_ Montana Free Press
- \_\_\_\_\_ Montana Legal Services Association
- \_\_\_\_\_ Montana Meth Project
- \_\_\_\_\_ Montana Natural History Center
- \_\_\_\_\_ Montana Spay/Neuter Task Force
- \_\_\_\_\_ Montana Supporting Military
- \_\_\_\_\_ Montana Trout Unlimited
- \_\_\_\_\_ Montana Watershed Coordination Council
- \_\_\_\_\_ Montana Wildlife Federation
- \_\_\_\_\_ NAMI Montana
- \_\_\_\_\_ NeighborWorks Montana
- \_\_\_\_\_ Queen City Ballet Company
- \_\_\_\_\_ Raise Montana
- \_\_\_\_\_ Rural Employment Opportunities (REO)
- \_\_\_\_\_ Spay Montana
- \_\_\_\_\_ The Foundation for Montana History
- \_\_\_\_\_ Thrive
- \_\_\_\_\_ Trust Montana
- \_\_\_\_\_ Wild Montana
- \_\_\_\_\_ Windhorse Equine Learning
- \_\_\_\_\_ WorldMontana
- \_\_\_\_\_ Undesignated

WRITE IN NON PROFITS (must be a 501(c)3)



## Your Gift. Your Choice.

## Support the Montana Nonprofits You Value Most.



# 2023/2024 Charitable Giving Pledge Form

### Alternative Energy Resources Organization (AERO)

Helping communities build place-based, climate healthy and product centric community food systems. We believe in partnerships and networks, because community is the future of sustainability.

[aeromt.org](http://aeromt.org)



### Big Brothers Big Sisters of Montana

Provides children facing adversity with strong, enduring, professionally supported, one-to-one mentoring relationships that change their lives for the better, forever.



### Bike Walk Montana

Safe cycling, walking, and rolling for transportation and recreation across the State of Montana.

[bikewalkmontana.org](http://bikewalkmontana.org)



### Bridgercare

Providing compassionate, affordable sexual and reproductive healthcare and education to people of all genders, regardless of ability to pay.

[bridgercare.org](http://bridgercare.org)



### Butte Spirit Center

Provides a safe, peer supported and clinically licensed transitional living environment for people in recovery from substance use disorder.

[buttespirit.org](http://buttespirit.org)



### Camp Mak-A-Dream

Empowers survivors and their families to live with and beyond cancer through life-changing Montana experiences where they strengthen life skills, gain resilience & develop lasting relationships.

[campdream.org](http://campdream.org)



### Cancer Support Community Montana

So No One Faces Cancer Alone. We ensure that all people impacted by cancer are empowered by knowledge, strengthened by action and sustained by community.

[cancersupportmontana.org](http://cancersupportmontana.org)



### Disability Rights Montana

Provides information, education, advocacy, and legal representation to Montanans with disabilities to protect and expand their human, legal, and civil rights.

[disabilityrightsmt.org](http://disabilityrightsmt.org)



### Friends of the Historical Museum at Fort Missoula

History is part of our future. By sharing history, we connect our community and country to its past and, thus, help the next generation understand their present.

[fortmissoulamuseum.org](http://fortmissoulamuseum.org)



### Friends of the Missouri Breaks Monument

Through advocacy, education, and stewardship the Friends protect and preserve the Upper Missouri River Breaks National Monument and its surrounding public lands.

[missouribreaks.org](http://missouribreaks.org)



### Great Falls Community Food Bank

Gathers quality "rescued" food as well as purchased food to distribute to our more than 70 agency partners who serve the hungry throughout North Central Montana.

[greatfallsfoodbank.org](http://greatfallsfoodbank.org)



### Heart of the Valley Animal Shelter

Cares for the lost and surrendered companion animals of Southwestern Montana and offers adoption, spay/neuter, humane education, outreach, and training programs at its open-admission shelter.

[heartofthevalleyshelter.org](http://heartofthevalleyshelter.org)



### Holter Museum of Art

Connects, inspires, and heals our community through the power of art. Thought-provoking exhibitions, expanding partnerships, and innovative social impact programs shape this community-focused, art-based education center.

[holtermuseum.org](http://holtermuseum.org)



### Jeannette Rankin Peace Center

Focusing on facilitating and supporting the connections and conversations that build nonviolence, social justice, and environmental sustainability.

[jrpc.org](http://jrpc.org)



### K9 Care Montana

Provides the highest quality service dogs at NO cost to Montana wounded veterans, first responders and children challenged by autism.

[k9caremontana.org](http://k9caremontana.org)



### Last Chance Community Pow Wow

Ever-present in the community, we share our Native American culture, drumming, and dancing through an annual pow wow that celebrates/promotes tolerance of cultural differences.

[lastchancepowwow.com](http://lastchancepowwow.com)



### Lewis & Clark Humane Society

Provides shelter and advocacy for homeless pets on the pathway to their forever home.

[lchsmontana.org](http://lchsmontana.org)



### Montana Association for the Blind

Provides a forum for the educational, social, physical, and rehabilitative improvement of the blind and low vision population of Montana.

[mabsop.org](http://mabsop.org)



### Montana Audubon

Promotes appreciation, knowledge and conservation of Montana's native birds, other wildlife, and natural ecosystems to safeguard biological diversity for current and future generations.

[mtaudubon.org](http://mtaudubon.org)



### Montana College Attainment Network

Support and advance the goal of all Montanans achieving their college, career, and lifestyle aspirations.

[mtcollegeattainment.org](http://mtcollegeattainment.org)



### Montana CASA/GAL Association

Advocating on behalf of over 1,000 abused and neglected children in Montana. Support is provided through program capacity building activities, statewide awareness campaigns and trainings.

[montanacasagal.org](http://montanacasagal.org)



### Montana Discovery Foundation

Brings the student to the mountain and the mountain to the student through conservation education and interpretive services for all ages.

[montanadiscoveryfoundation.org](http://montanadiscoveryfoundation.org)



### Montana Free Press

Empowers citizens and strengthens Montana's democracy by serving as an independent watchdog that reports on the most important issues facing the state.

[montanafreepress.org](http://montanafreepress.org)



### Montana Food Bank Network

Our mission is to end hunger in Montana through food acquisition and distribution, education and advocacy. MFBN has been feeding Montana since 1983.

[mfbn.org](http://mfbn.org)



### Montana Legal Services Association

Helping make justice possible for all Montanans, no matter their income, by providing free civil legal aid to low-income Montanans statewide.

[mtlsa.org](http://mtlsa.org)



### Montana Meth Project

Reduce first-time Methamphetamine use among Montana's youth through a campaign of public service messaging, public policy, and community action.

[montanameth.org](http://montanameth.org)



### Montana Natural History Center

Inspires Montanans to steward our precious natural resources through science and nature education for people of all ages.

[MontanaNaturalist.org](http://MontanaNaturalist.org)



### Montana Spay/Neuter Task Force

End pet overpopulation and animal neglect by reducing the number of unwanted animals by offering spay/neuter support so people may continue to care for their pets.

[montanaspayneutertaskforce.org](http://montanaspayneutertaskforce.org)



### Montana Supporting Military

Boosts the morale of deployed troops through care packages, clothing, food, and other needs. Their families back home are also supported in various ways.

[mtsupportingmilitary.org](http://mtsupportingmilitary.org)



### Montana Trout Unlimited

Founded in 1964, Montana Trout Unlimited is a statewide grassroots organization dedicated to conserving, protecting and restoring Montana's cold water fisheries and their watersheds.

[montanatu.org](http://montanatu.org)



### Montana Watershed Coordination Council

Unite and support Montana's community-based conservation network to promote healthy and productive watersheds.

[mtwatersheds.org](http://mtwatersheds.org)



### Montana Wildlife Federation

Protects Montana's fish and wildlife, our wild lands and waters, and fights for public access for hunting, fishing, and other outdoor recreation.

[montanawildlife.org](http://montanawildlife.org)



### NAMI Montana

Continues to educate, advocate and support people with mental illness and their families through grassroots work.

[namimt.org](http://namimt.org)



### NeighborWorks Montana

Helps low and moderate income families buy or rent an affordable home and keep their home by providing education and financial assistance throughout Montana.

[nwmt.org](http://nwmt.org)



### Queen City Ballet Company

Contributes to a vibrant culture by providing Helena with professional quality dance productions, trains dance students, and provides scholarships to talented students.

[queencityballet.com](http://queencityballet.com)



### Raise Montana

Provides statewide leadership shaping collaborations and strengthening child care resource and referral agencies; building diverse, professional, quality early childhood systems accessible to all Montana families.

[raisemt.org](http://raisemt.org)



### Rural Employment Opportunities (REO)

Assists low-income Montanans access education and training leading to year-round employment, and economic security. Provides for basic food and gas needs for migrant families.

[reomontana.org](http://reomontana.org)



### Spay Montana

We can't save them all but we can try and make life a much better and happier place to be.

[spaymontana.org](http://spaymontana.org)



### The Foundation for Montana History

Supports community-based history and preservation projects by making grants and other funding available to preserve and interpret Montana's rich history.

[mthistory.org](http://mthistory.org)



### Thrive

Provides Montana families with the resources, tools, and assistance they need to raise healthy, successful children through signature programs that offer mentoring, education, and support.

[allthrive.org](http://allthrive.org)



Like us on Facebook!  
[Facebook.com/mtshares](https://www.facebook.com/mtshares)

## Montana Shares' Role

We are a 501c3 nonprofit and donations are tax deductible as permitted by law. No goods or services were given in exchange for this donation. Information provided is kept strictly confidential.

Individual nonprofit organizations generally can't take part in workplace charitable giving campaigns unless they are part of Montana Shares or a similar umbrella group. Montana Shares acts as an administrative mechanism through which you make payroll contributions to the groups of your choice.

Shares also advises and assists member nonprofits in fundraising and public relations. We raise public awareness of how all nonprofit organizations improve Montanans' quality of life. Montana Shares distributes 85% of the charitable giving campaign donations to member groups, 75% to non-member write-ins.

Montana Shares ensures that your donations go to well-run organizations. We are audited each year and meet the national standards for federations set by Community Shares—USA. We also hold our members to strict accountability standards.



### Trust Montana

A statewide community land trust striving to build livable communities by preserving land and homes people can afford.

[trustmontana.org](http://trustmontana.org)

### Wild Montana

Uniting and mobilizing communities to keep Montana wild.

[wildmontana.org](http://wildmontana.org)

### Windhorse Equine Learning

Empowers youth and enriches lives through experiential and reflective learning opportunities with horses.

[windhorseequinelearning.org](http://windhorseequinelearning.org)

### WorldMontana

Connects the world with Montana, through citizen diplomacy & professional exchanges, home hospitality and international leadership development.

[worldmontana.org](http://worldmontana.org)



Secure online giving  
using your credit card is  
available at  
[www.montanashares.org](http://www.montanashares.org)